

# How to install Thermal-Expert USB driver?

**i3system**

**2015.12.29**

# Revision History

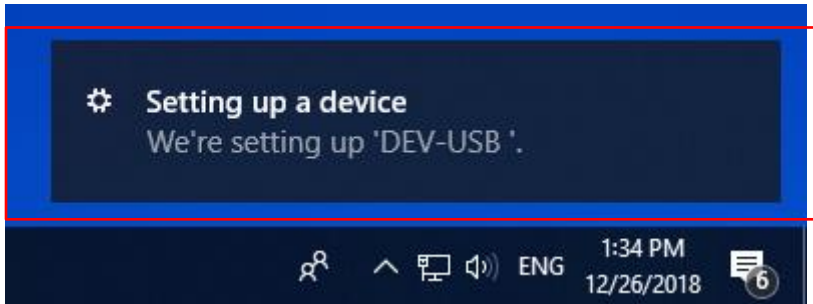
Version	Date	Person	Modification	Note
1.0	2015.12.29	Juntae Kim	First edition	
1.1	2018.12.20	Wooju Kim	Update for Auto Install & Windows 10	

# 1. Introduction of Auto Installing

- ❖ This manual is about the method of installing Thermal Expert USB driver on Windows 10.
- ❖ It is recommended that you use Windows 10.
- ❖ Please go to “2. Introduction of Manual installing” on page.9 for Windows 8.1 and below versions.
- ❖ Please make sure your internet is connected before you get started.

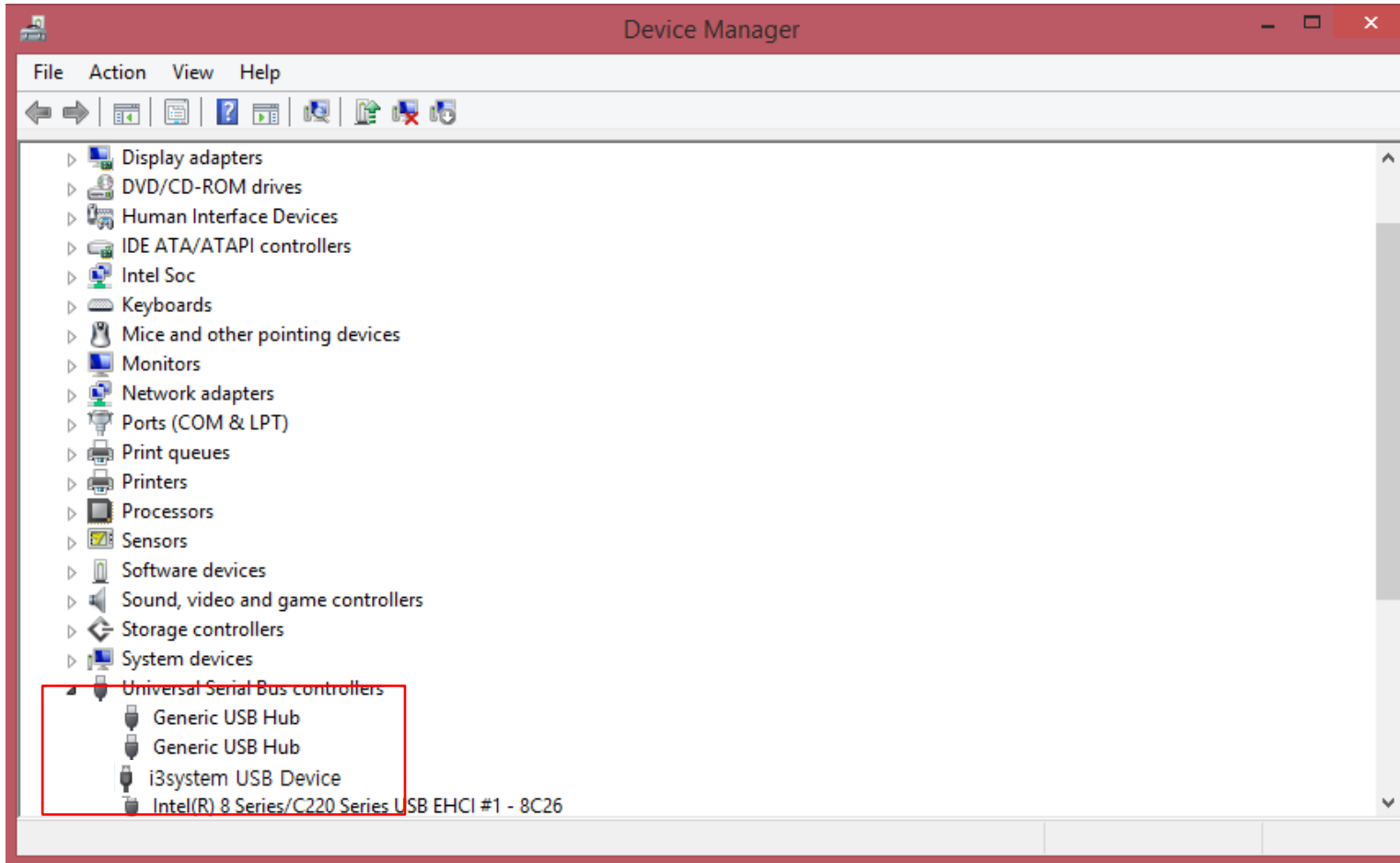
# 1.1 Step 1

- ❖ Plug 'Thermal-Expert' into your PC.
- ❖ You will see the message that tells you that the driver is installing.



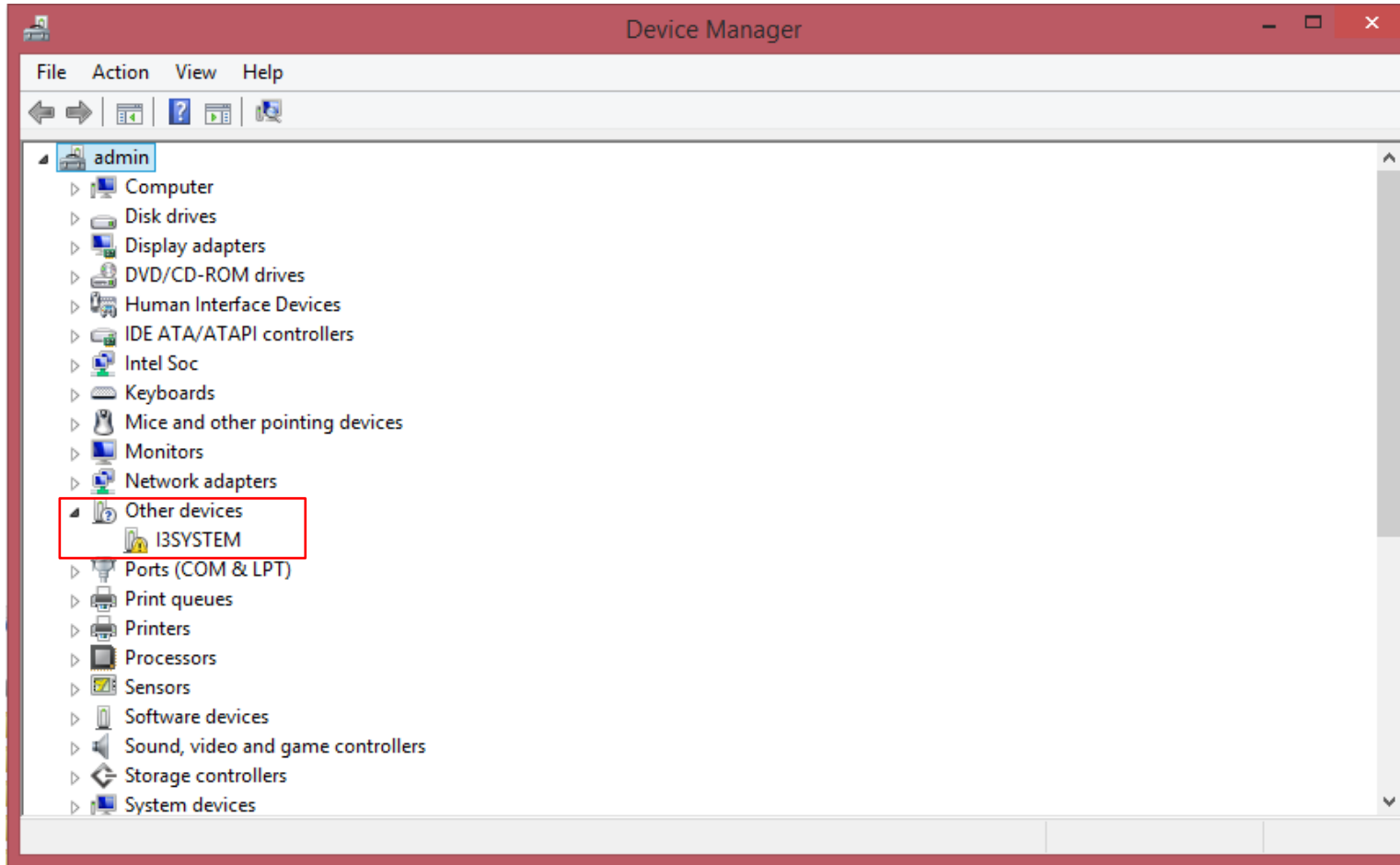
# 1.1 Step 2

- ❖ Once you execute 'Device manager', you will be able to use Thermal-Expert on your PC.
- ❖ If the driver has not been installed automatically, proceed to the next step.



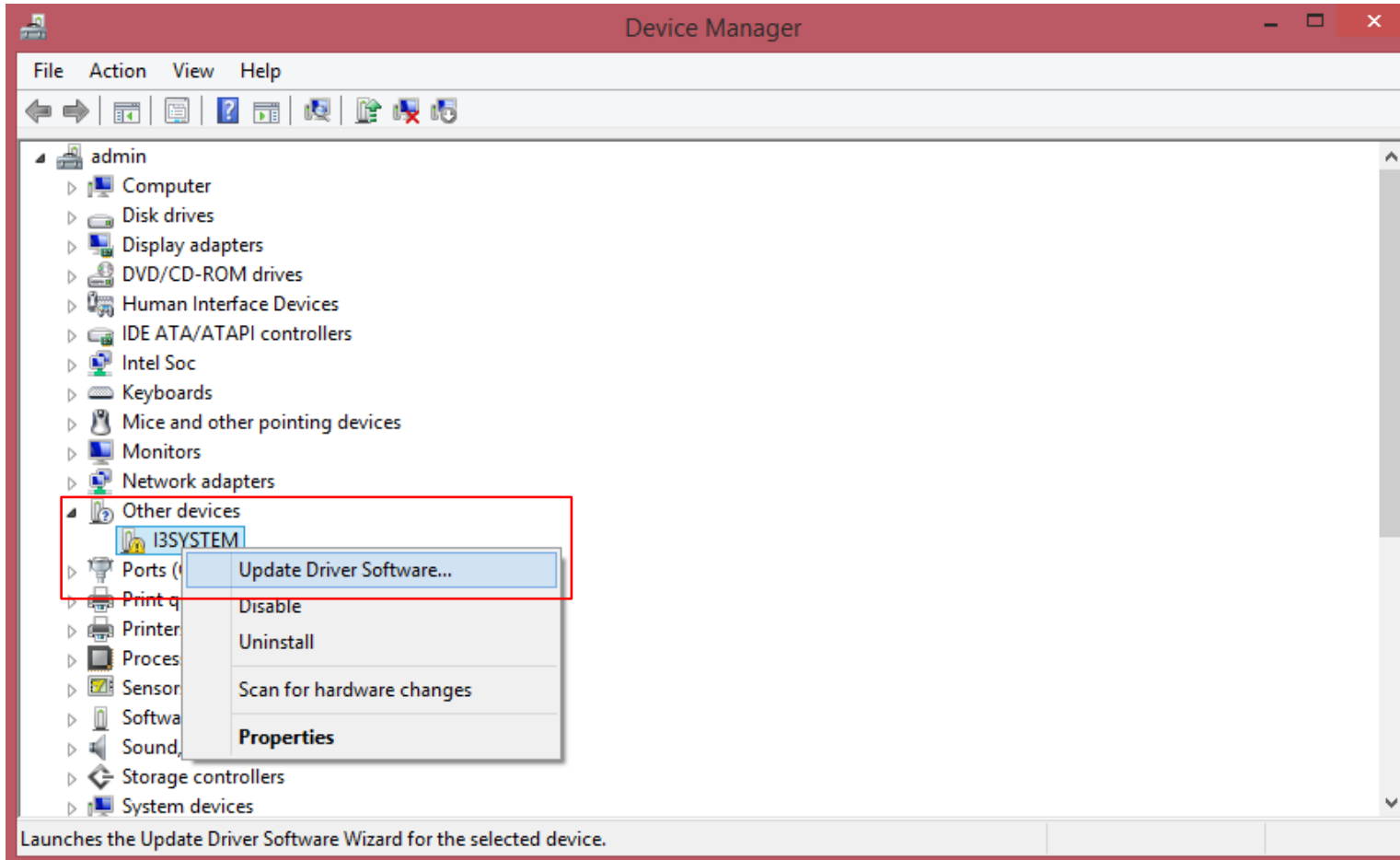
# 1.1 Step 3

❖ In Device Manager, you will see either 'DEV-USB' or 'I3SYSTEM'



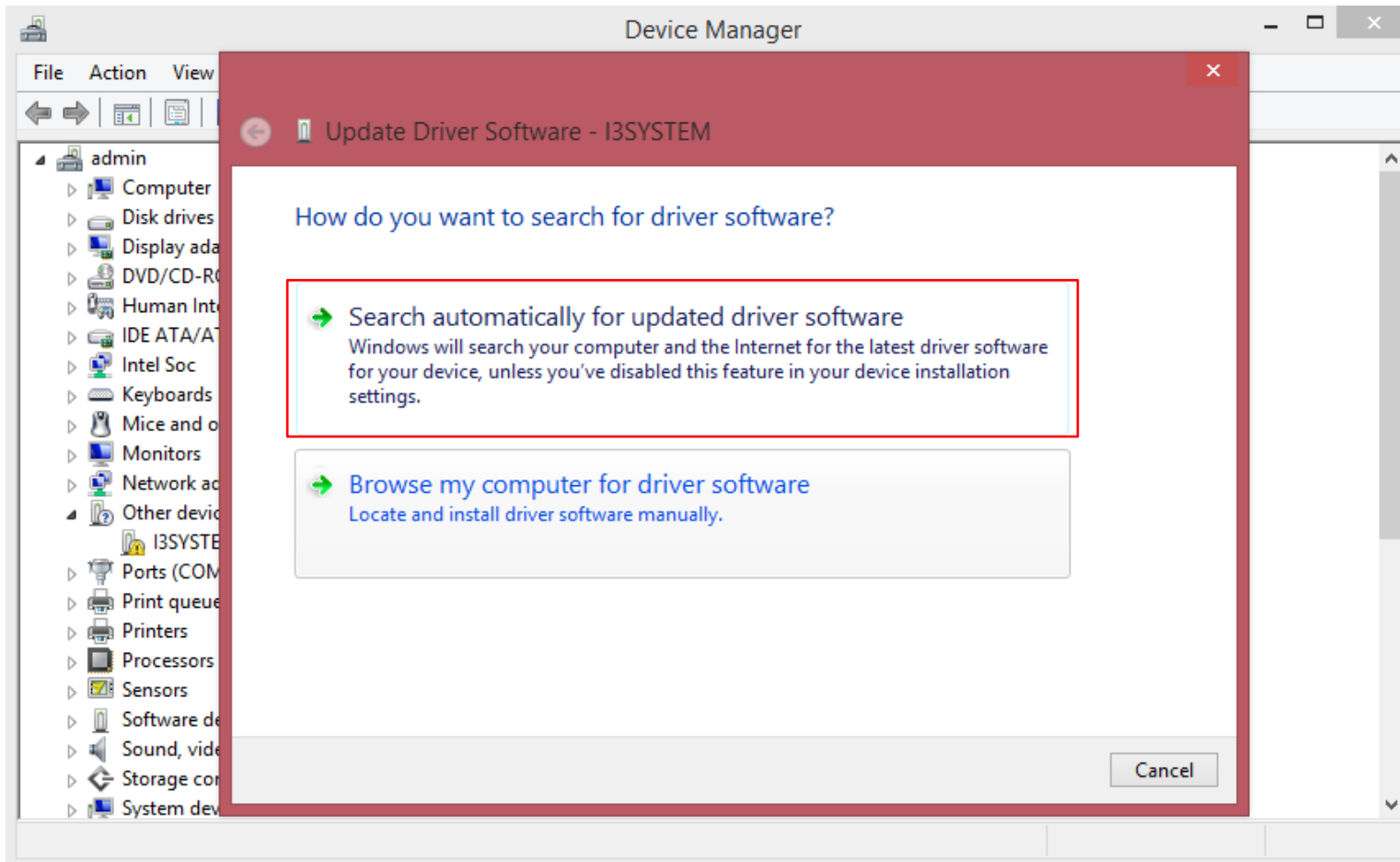
# 1.1 Step 4

❖ Right click on 'I3SYSTEM' and click 'Update Driver Software'.



# 1.1 Step 5

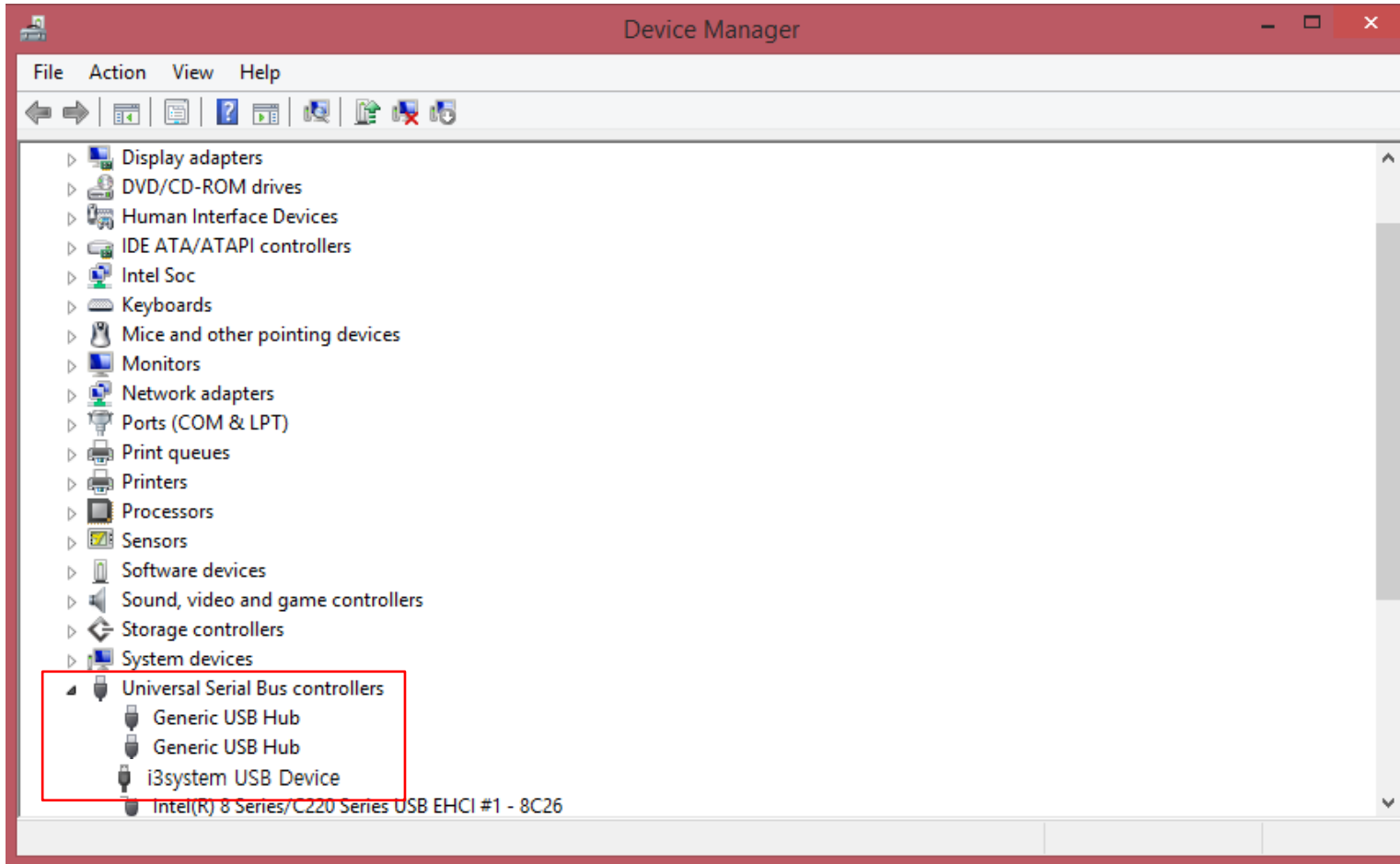
❖ Click 'Search automatically for updated driver software'.





# 1.1 Step 6

❖ The Driver is installed automatically, and you can use Thermal-Expert on your PC.



## 2. Introduction of Manual Installing

- ❖ This manual informs you about the method of installing Thermal-expert device driver.
- ❖ Before going to the next page, please download 'ThermalExpert\_driver' from the website and unzip it.
- ❖ Download the appropriate file for your OS.
- ❖ 1.0.3.0 is Windows 8.1 and below, 1.0.4.0 is Windows 10
- ❖ You will see below image, in 'ThermalExpert\_driver'.

 amd64

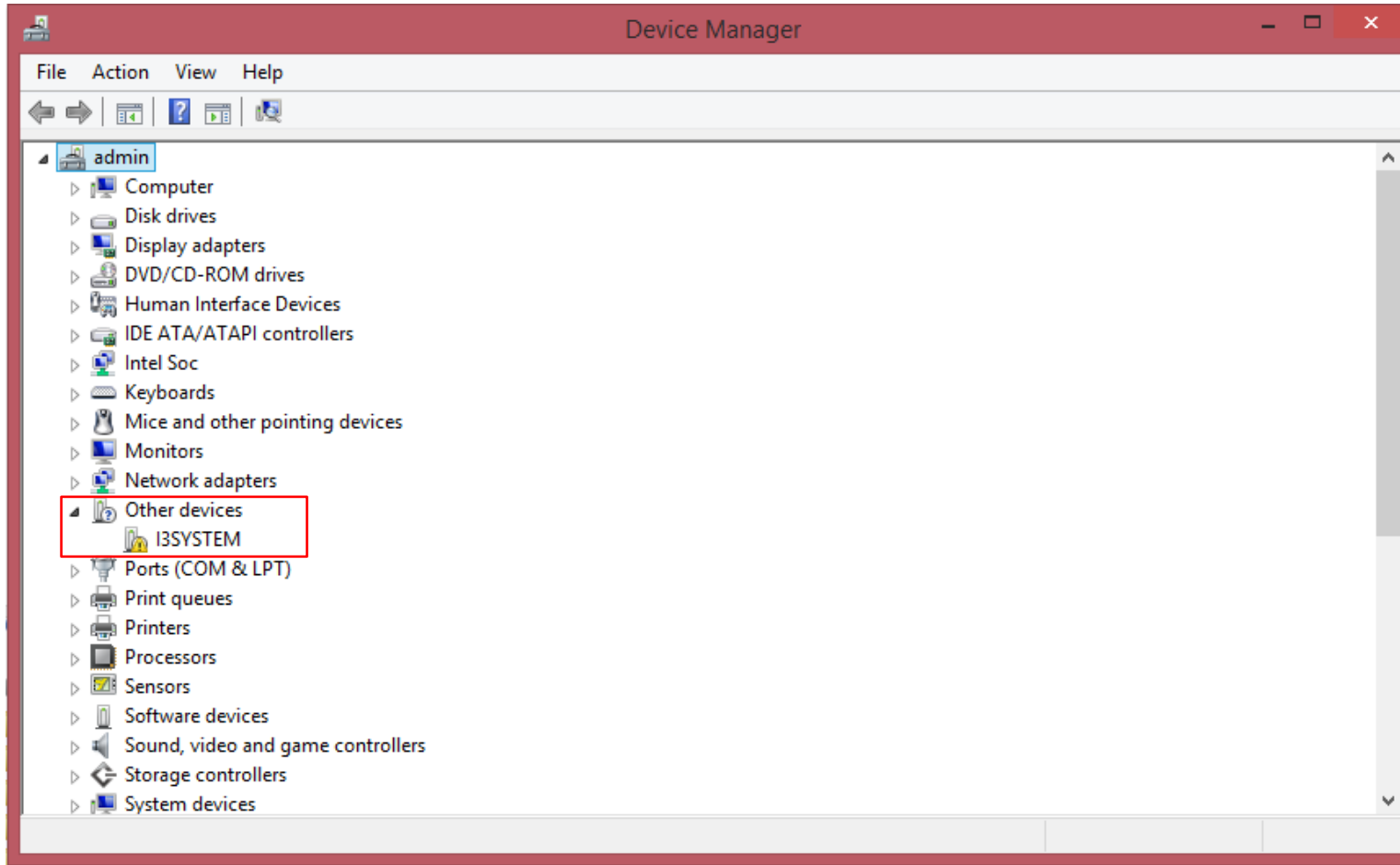
 i386

 i3usbdrv.cat

 i3usbdrv.inf

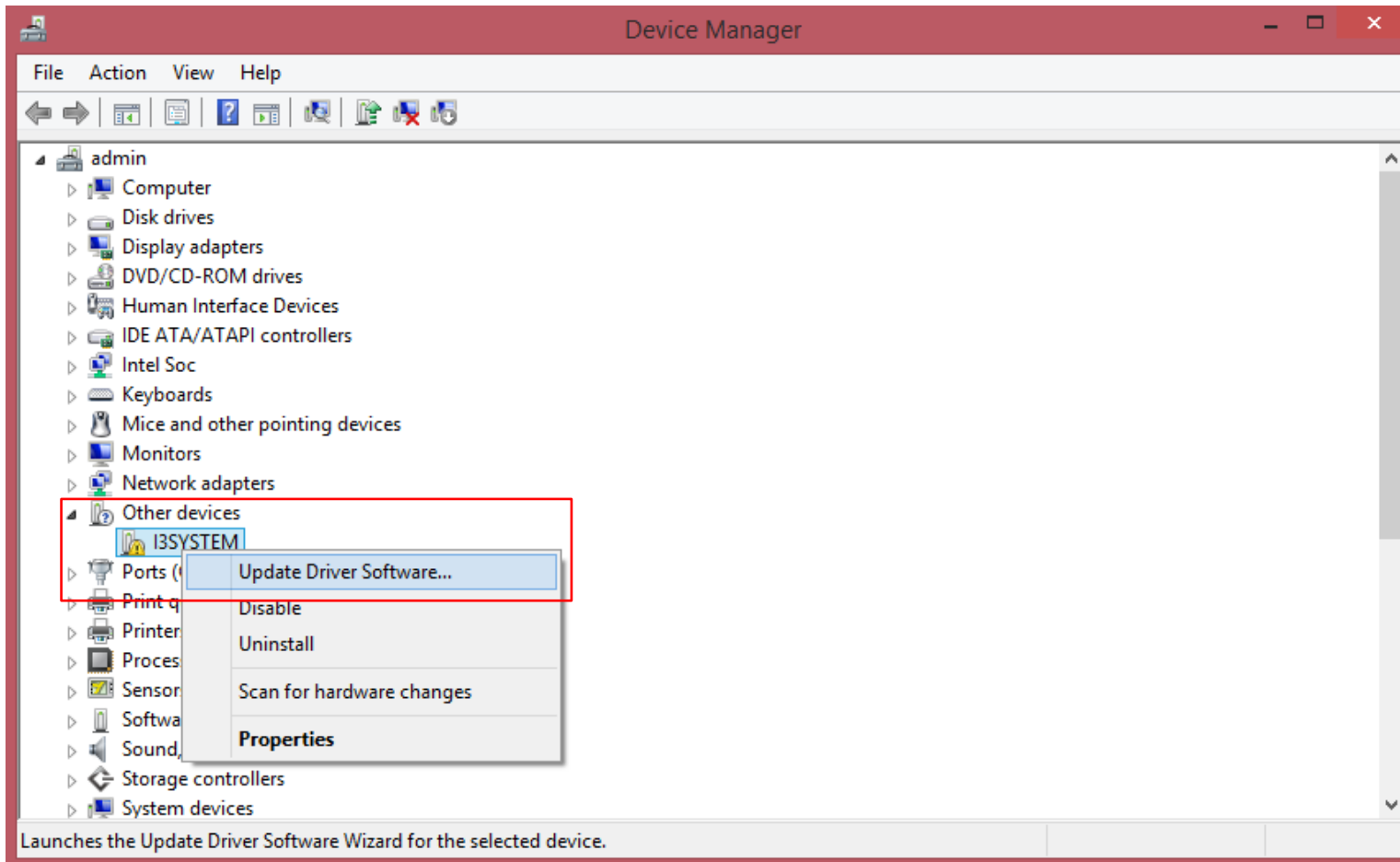
## 2.1 Step 1

❖ Plug 'Thermal-Expert' into your PC and execute 'Device Manager'. You can see 'I3SYSTEM'.



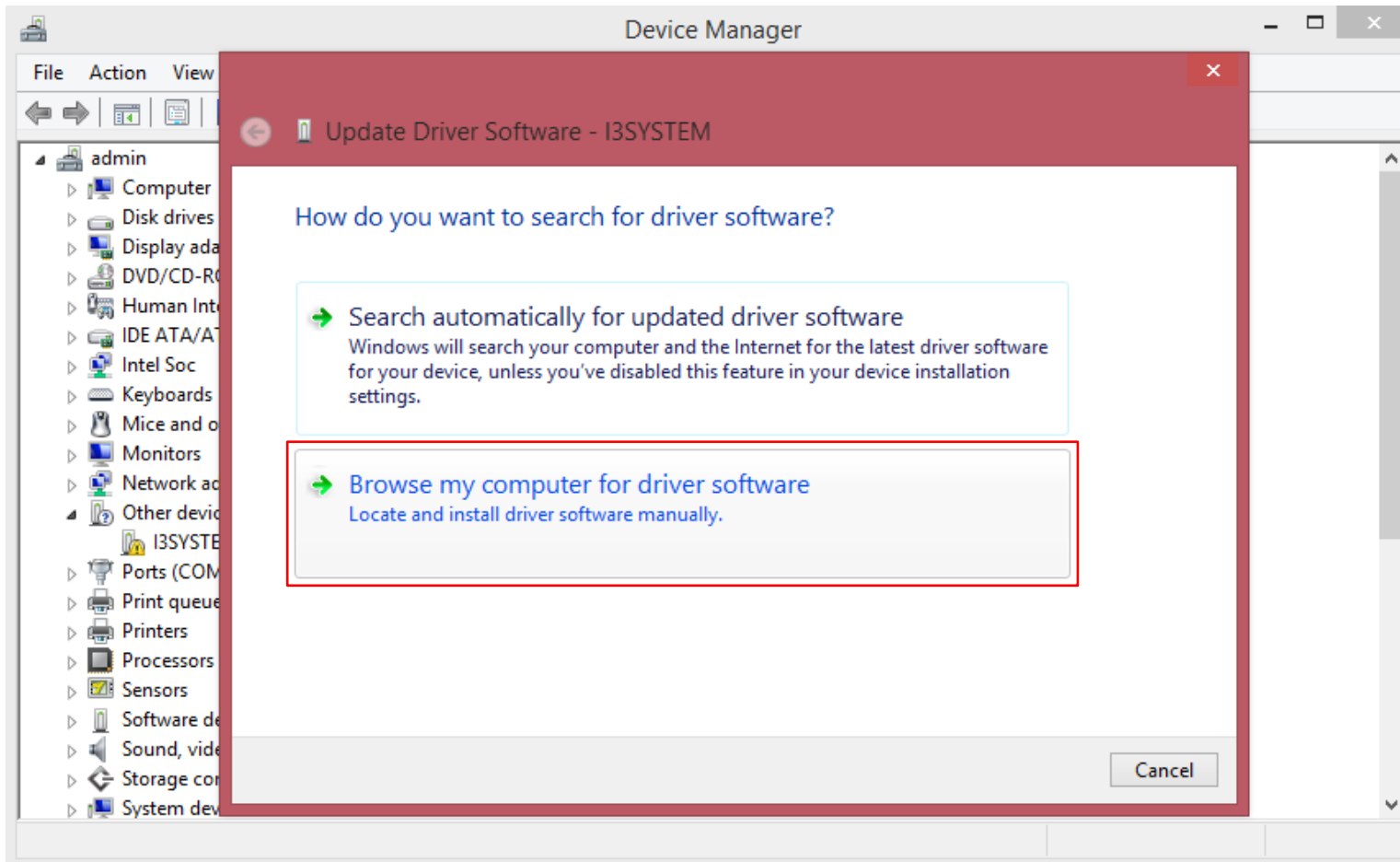
## 2.1 Step 2

❖ Right click 'I3SYSTEM' and click 'Update Driver Software'.



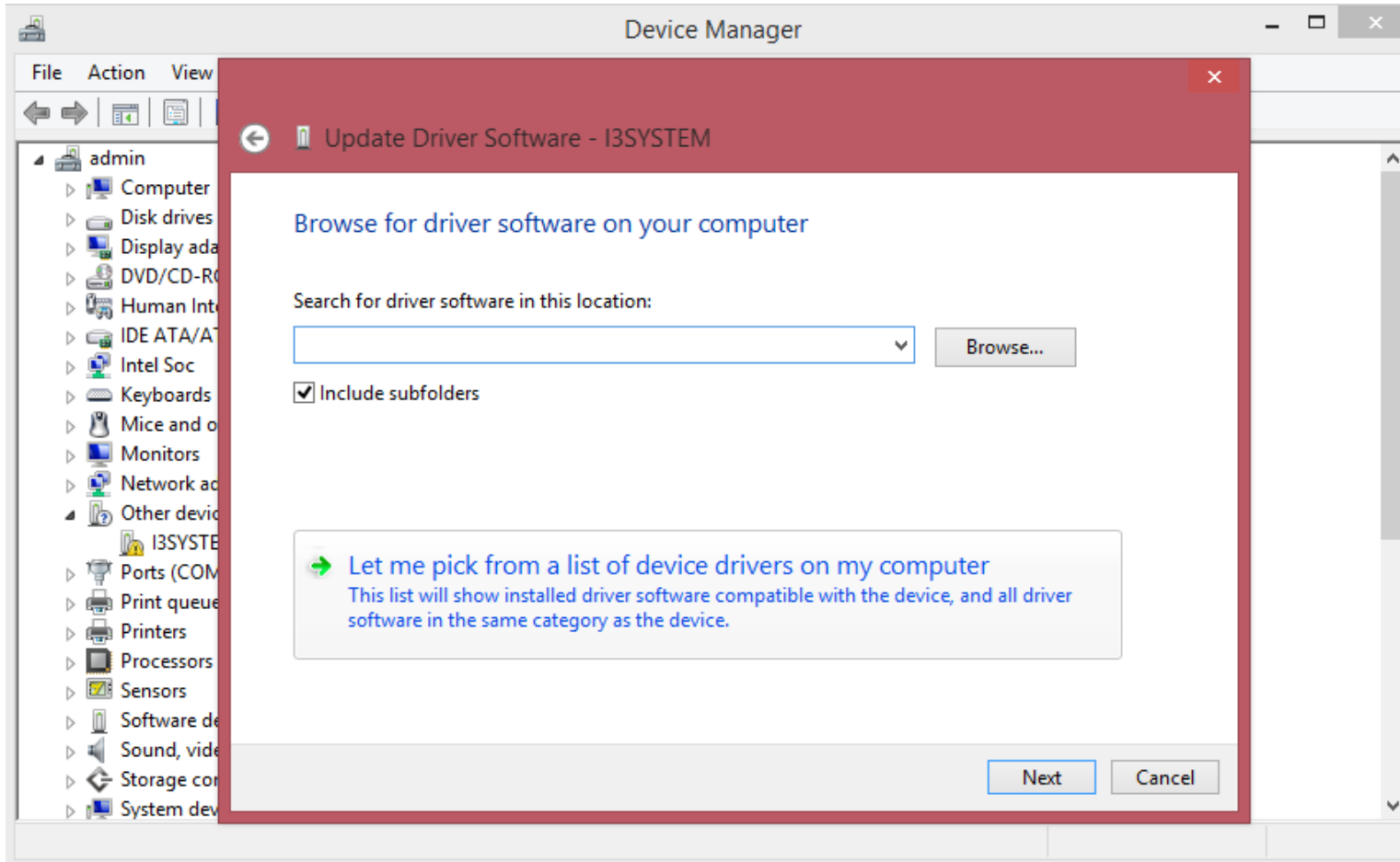
## 2.1 Step 3

❖ Click 'Browse my Computer for driver Software'.



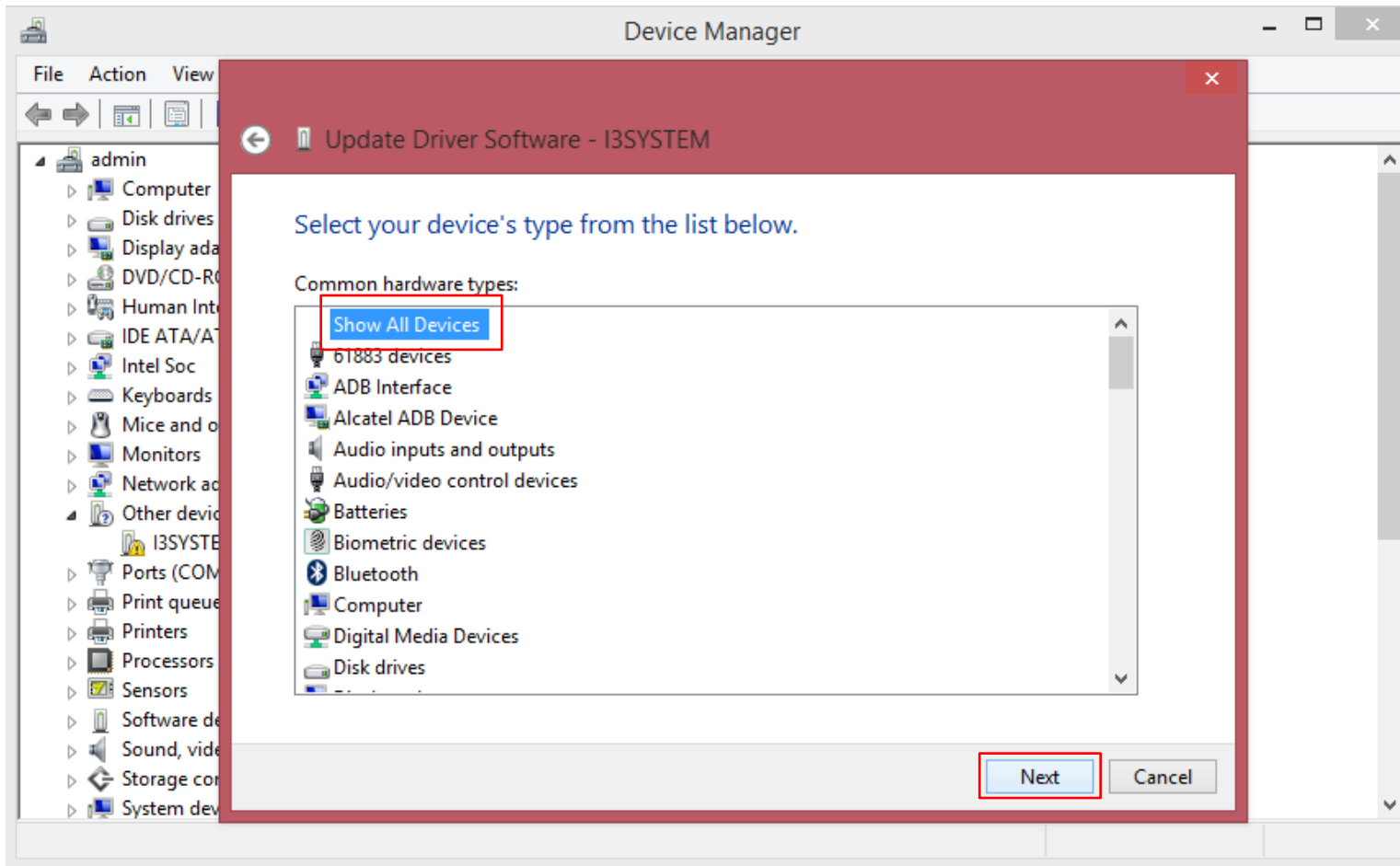
## 2.1 Step 4

- ❖ Click 'Let me pick from a list of device drivers on my computer'.



## 2.1 Step 5

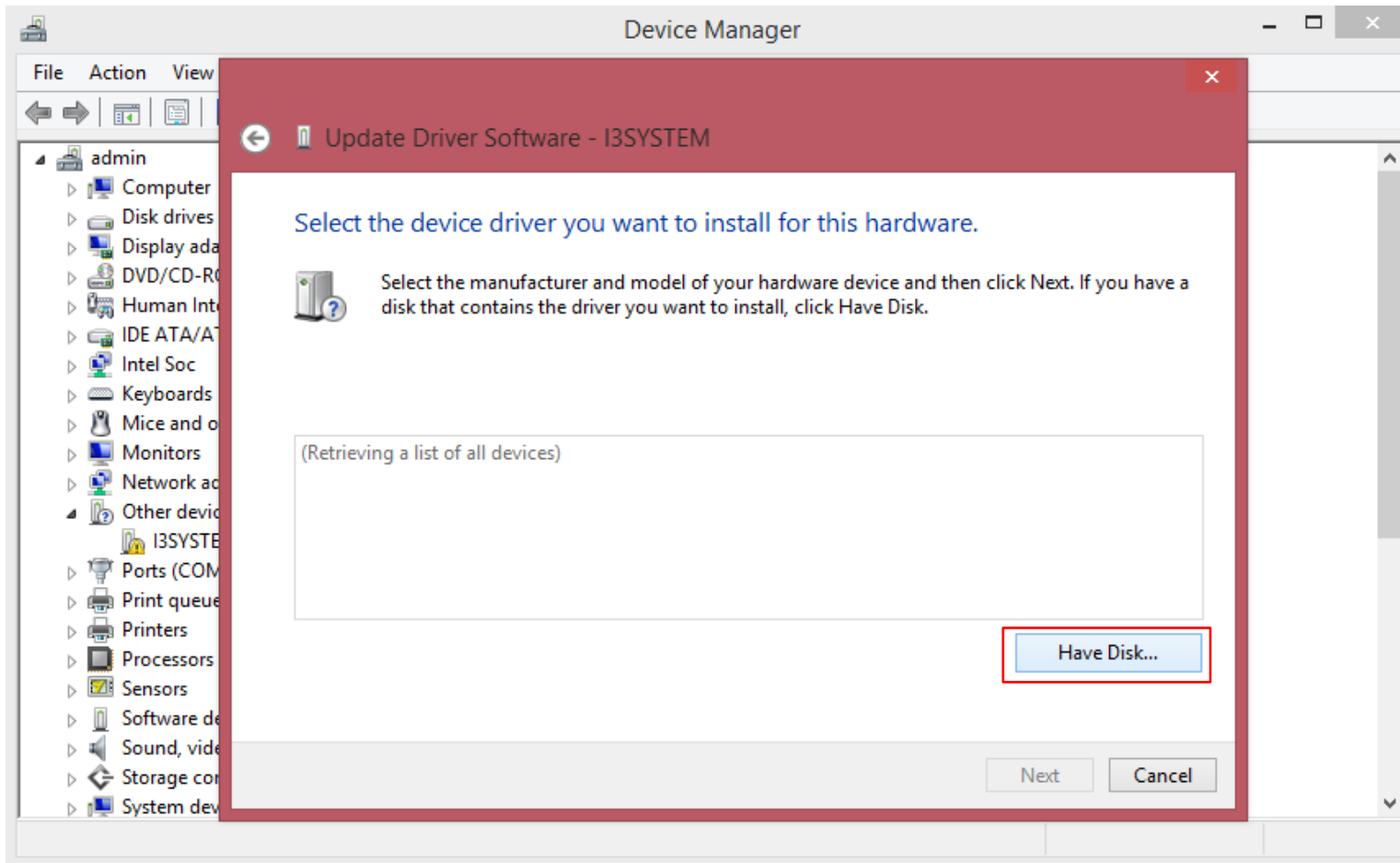
❖ Click 'Show all Devices' and Click 'Next'.





## 2.1 Step 6

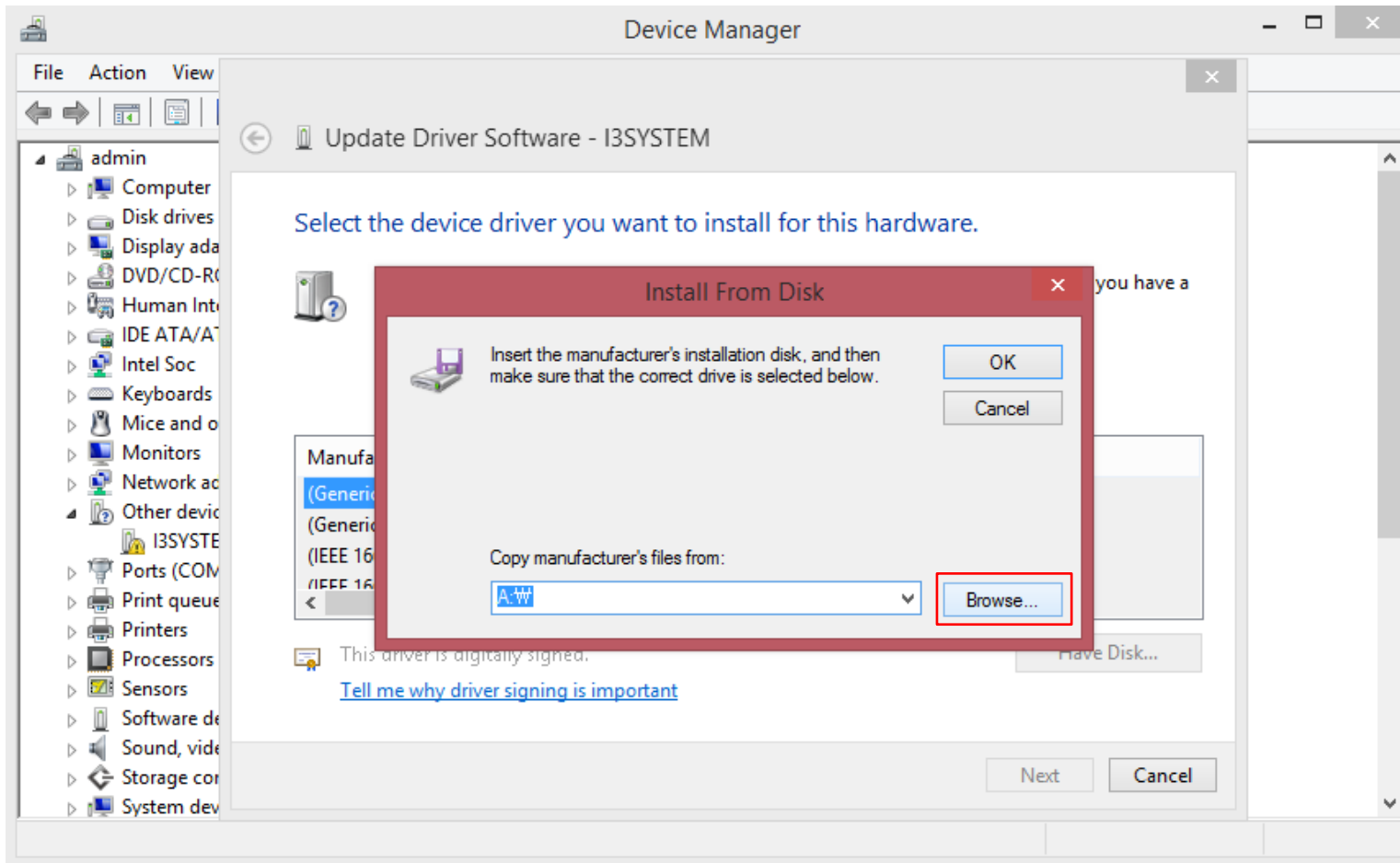
❖ Click 'Have Disk'.





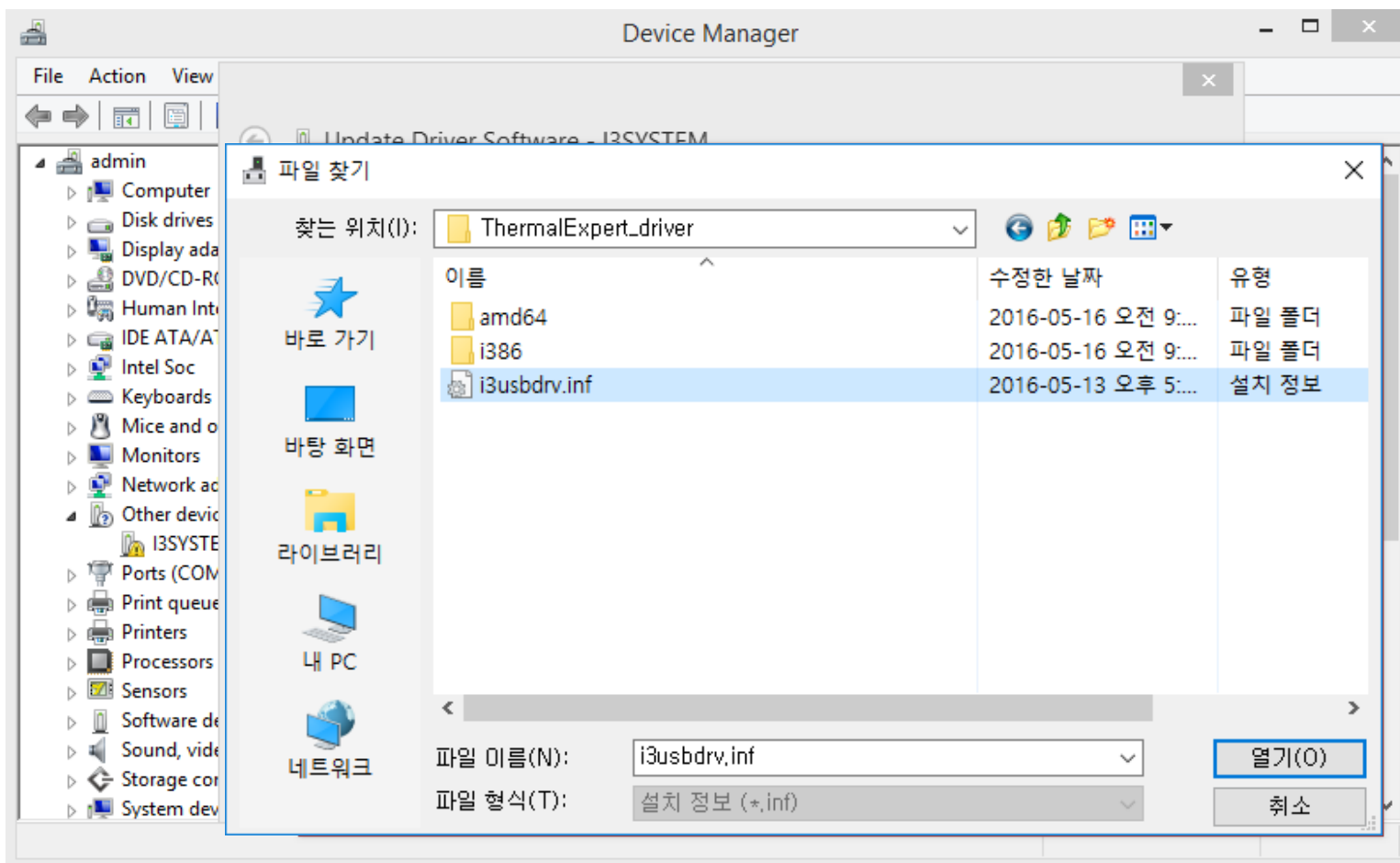
## 2.1 Step 7

❖ Click 'Browse'.



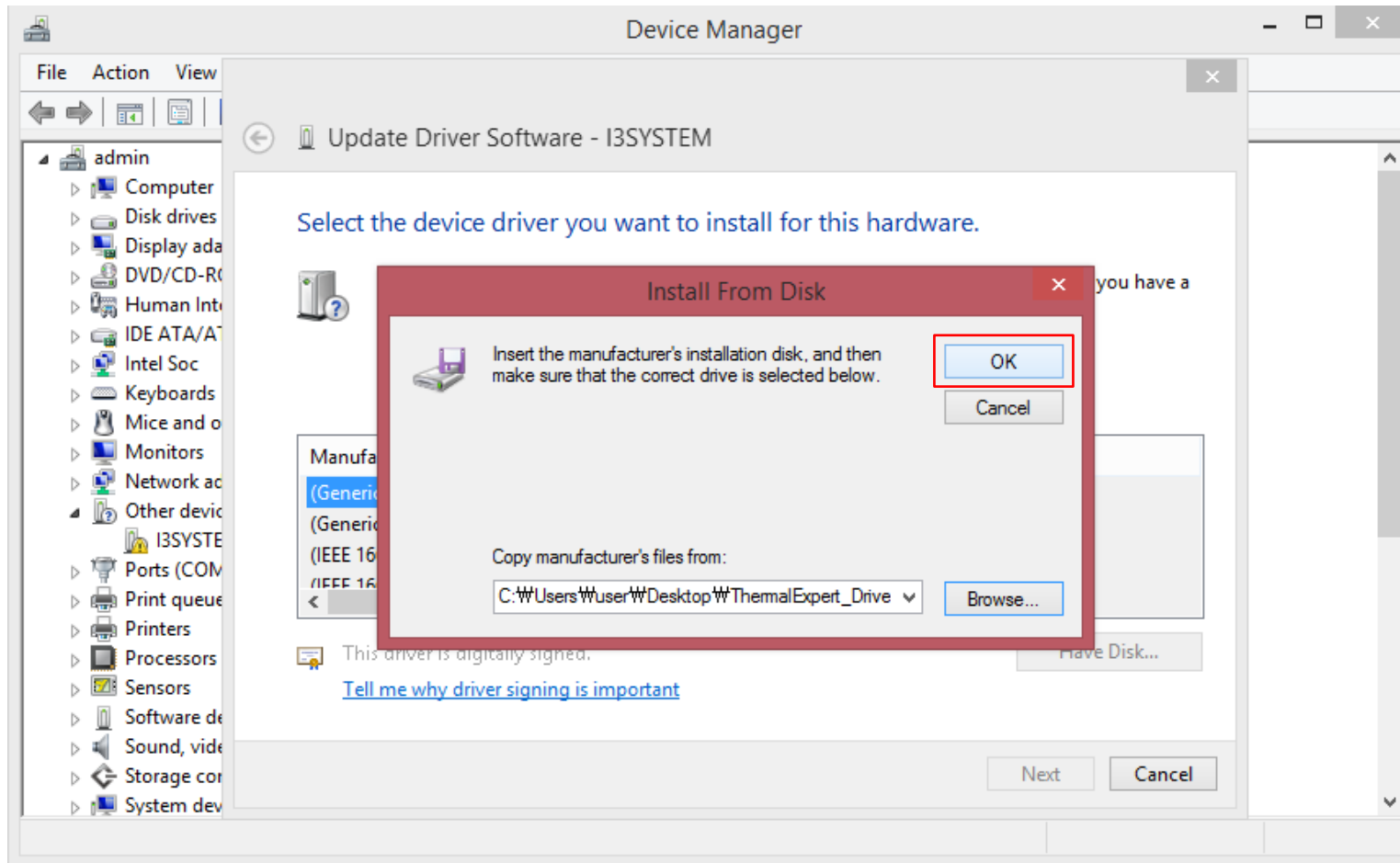
## 2.1 Step 8

❖ Find 'i3usbdrv.inf' at 'ThermalExpert\_Driver' in your PC and Click 'Open'.



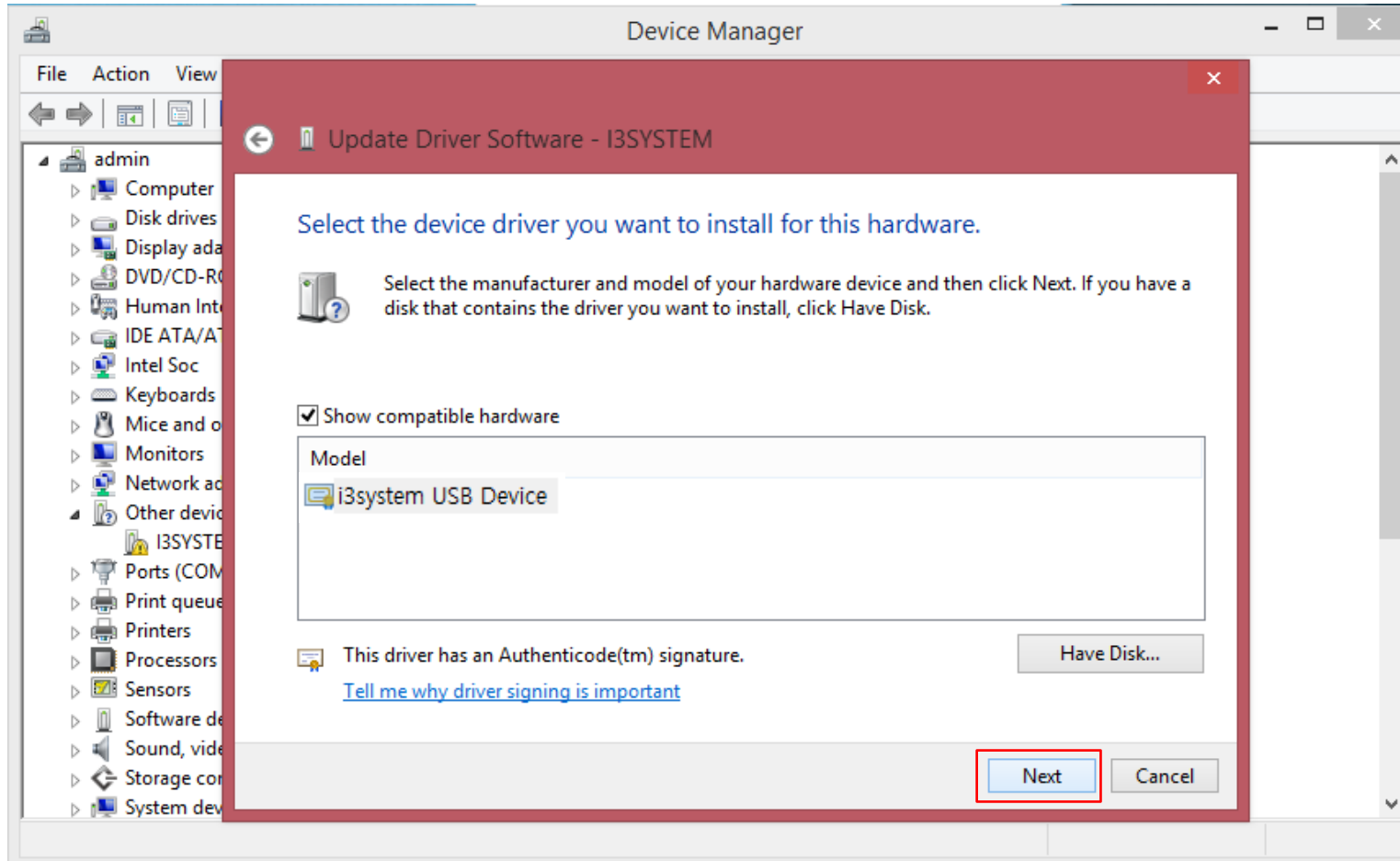
## 2.1 Step 9

❖ Click 'OK'.



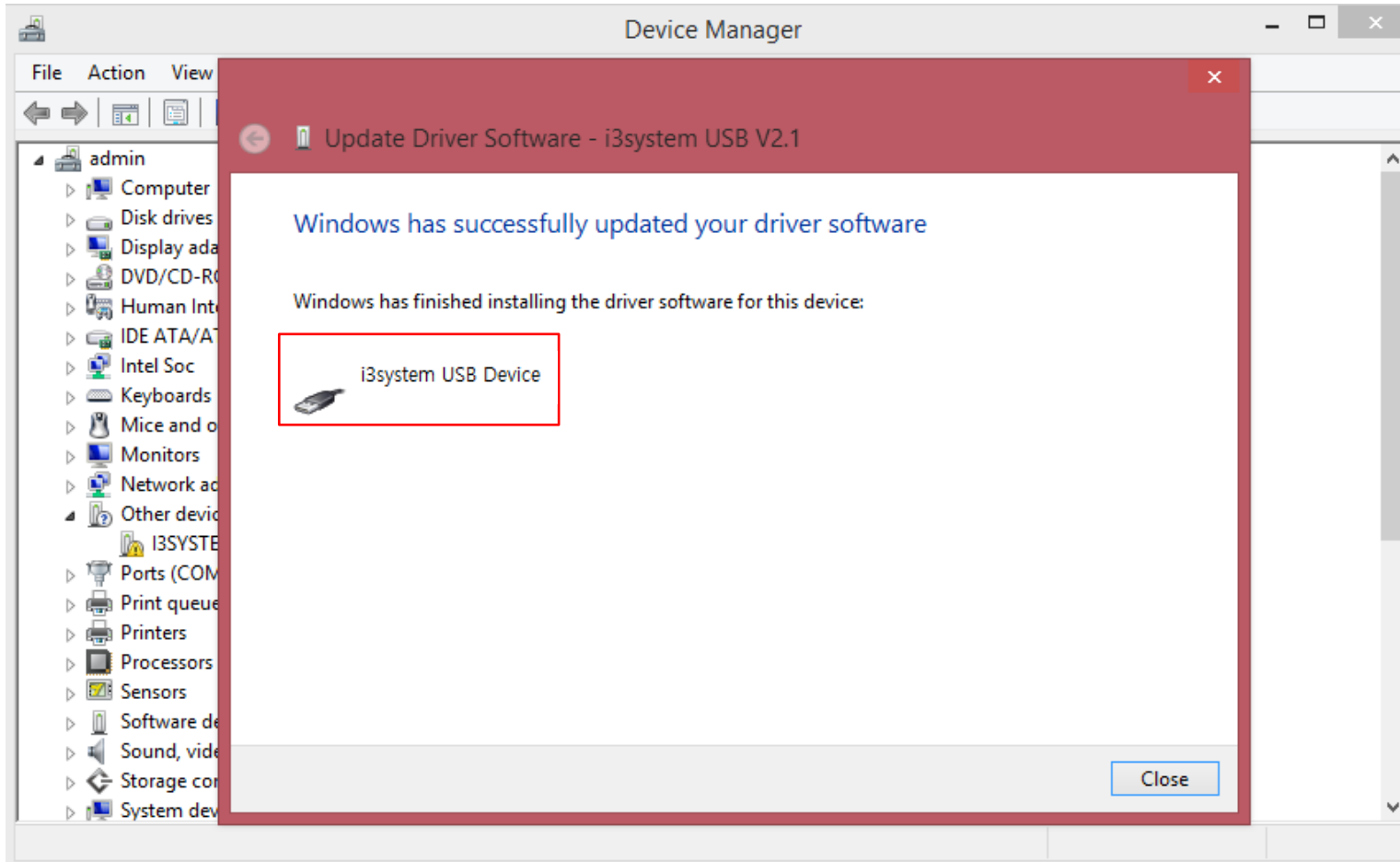
## 2.1 Step 10

❖ Click 'Next'.



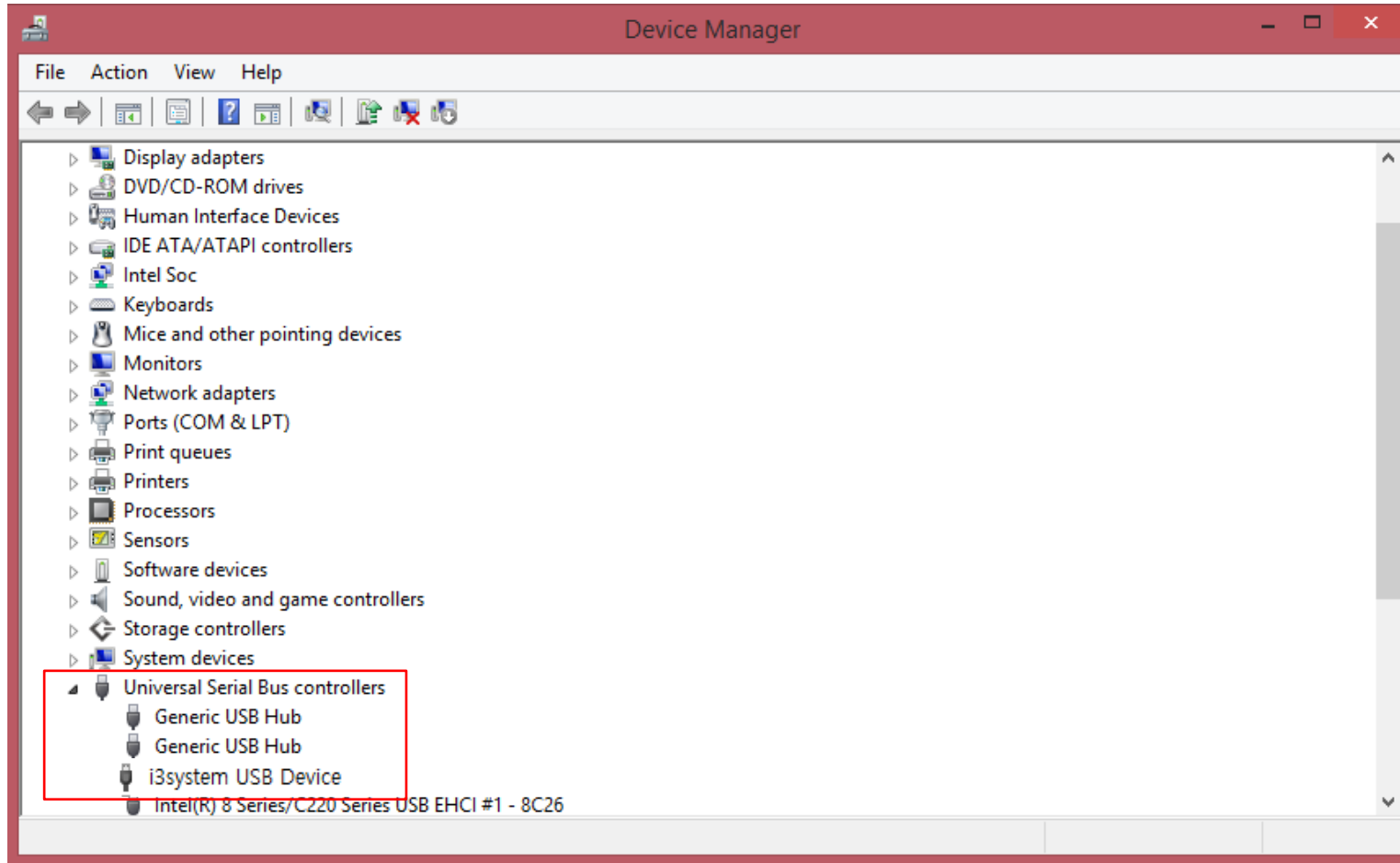
## 2.1 Step 11

❖ The driver is installed successfully as you can see below.



## 2.1 Step 12

❖ Finally you can use Thermal-Expert at your PC.



# 3. Epilogue

- ❖ Once you installed, you can use Thermal-Expert on your PC.
- ❖ You need to install this driver if you use Thermal-Expert on another PC.